

INDEX OF SHEETS

Sheet No. 1	Title Sheet
" 1A	FENCE
" 2	Typical Sections of Improvement
" 3	Intersections Std.
" 4	Superelevation "
" 5	Traffic Control Devices
" 6	Plan and Profile
" 7	Cross Sections

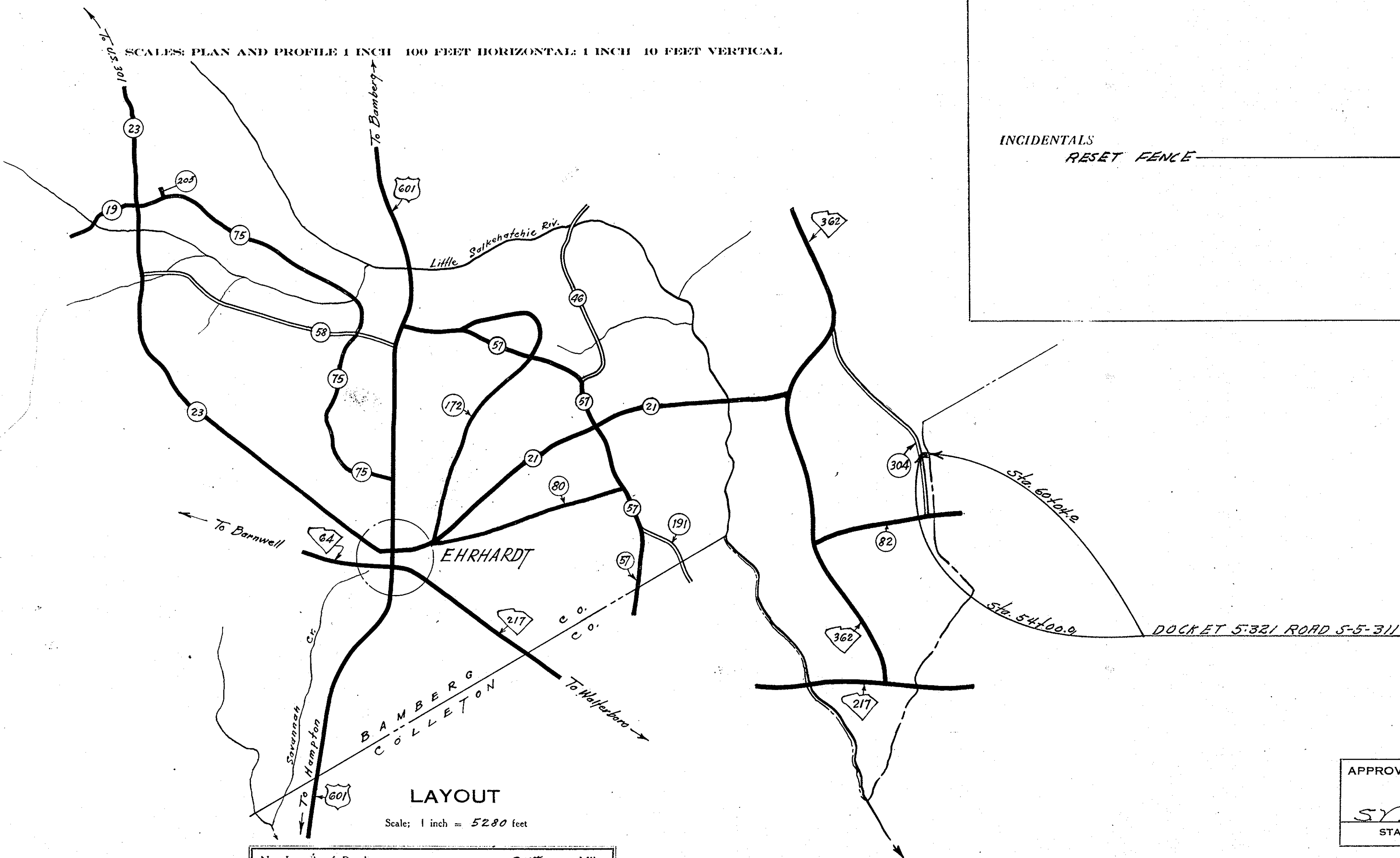
SOUTH CAROLINA
STATE HIGHWAY DEPARTMENT
COLUMBIA

PLAN AND PROFILE OF PROPOSED
STATE HIGHWAY

DOCKET 5-321
ROAD S-311 FROM END OF BIT. SURF. ROAD S-249 AT THE
COLLETON COUNTY LINE TO ROAD S-304

BAMBERG COUNTY

SCALE: PLAN AND PROFILE 1 INCH = 100 FEET HORIZONTAL; 1 INCH = 10 FEET VERTICAL



LAYOUT

Scale: 1 inch = 5280 feet

Net Length of Roadway =	0.115	Miles
Net Length of Bridges =	0	Miles
Net Length of Project =	0.115	Miles
Length of Exceptions =	0	Miles
Gross Length of Project =	0.115	Miles

Equalities in Stationing

CONVENTIONAL SIGNS

State Line	-----	Trolley Poles	• • •
County Line	-----	Power Poles	• • •
City or Town Limits	-----	Telephone or Telegraph Poles	• • •
Property Line	-----	Marsh	• • •
Fence	x x x	Trees	• • •
Retaining Wall	-----	Brush	• • •
Existing Road	-----	Stumps	• • •
Q and R.O.W. Lines of	-----	Buildings	• • •
Proposed Road	-----	Bridge	• • •
Railroad	-----	Concrete Box Culvert	• • •
Levee or Embankment	-----	Pipe Culvert	• • •
Guard Rail	-----	Drop Inlet and Culvert	• • •
Point of Intersection (P.I.)	Δ	Hub on Center Line	• • •

LEGEND

PROPOSED PROJECT
OTHER ROADS

PAV. ER.

Note: All workmanship and material on this project to conform with South Carolina State Highway Department Standard Specifications for Highway Construction dated Nov. 1, 1955

FED. ROAD DIV. NO.	STATE	COUNTY	DOCKET NO.	F. A. PROJ. NO.	ROUTE NO.	SHEET NO.	TOTAL SHEETS
3	S. C.	Bamberg	5-321	NONE	S-311	1	7

SUMMARY OF ESTIMATED QUANTITIES

EARTHWORK

Clearing and Grubbing within Roadway	L.S. N.E.C.
Clearing and Grubbing of Borrow and Material Pits	
Unclassified Excavation	C.Y. 376
Overhaul	C.Y.H.M. 1380
Selected Material for Shoulders	C.Y. 87

BASE COURSE

Earth Type Base Course (Pit Material)	C.Y. 276
Scarifying, Mixing, Remixing, Shaping and Reshaping	M.S.Y. 1375

SURFACING

Bituminous Surfacing (Double Treatment) Types 1 thru 6	S.Y. 1308
--	-----------

STRUCTURES

INCIDENTALS

RESET FENCE	L.F. 600
-------------	----------

APPROVED:

S. N. Roman 229.60
STATE HIGHWAY ENGINEER DATE

DEPARTMENT OF COMMERCE
BUREAU OF PUBLIC ROADS

RECOMMENDED FOR APPROVAL:

DISTRICT ENGINEER

DATE

APPROVED:

DIVISION ENGINEER

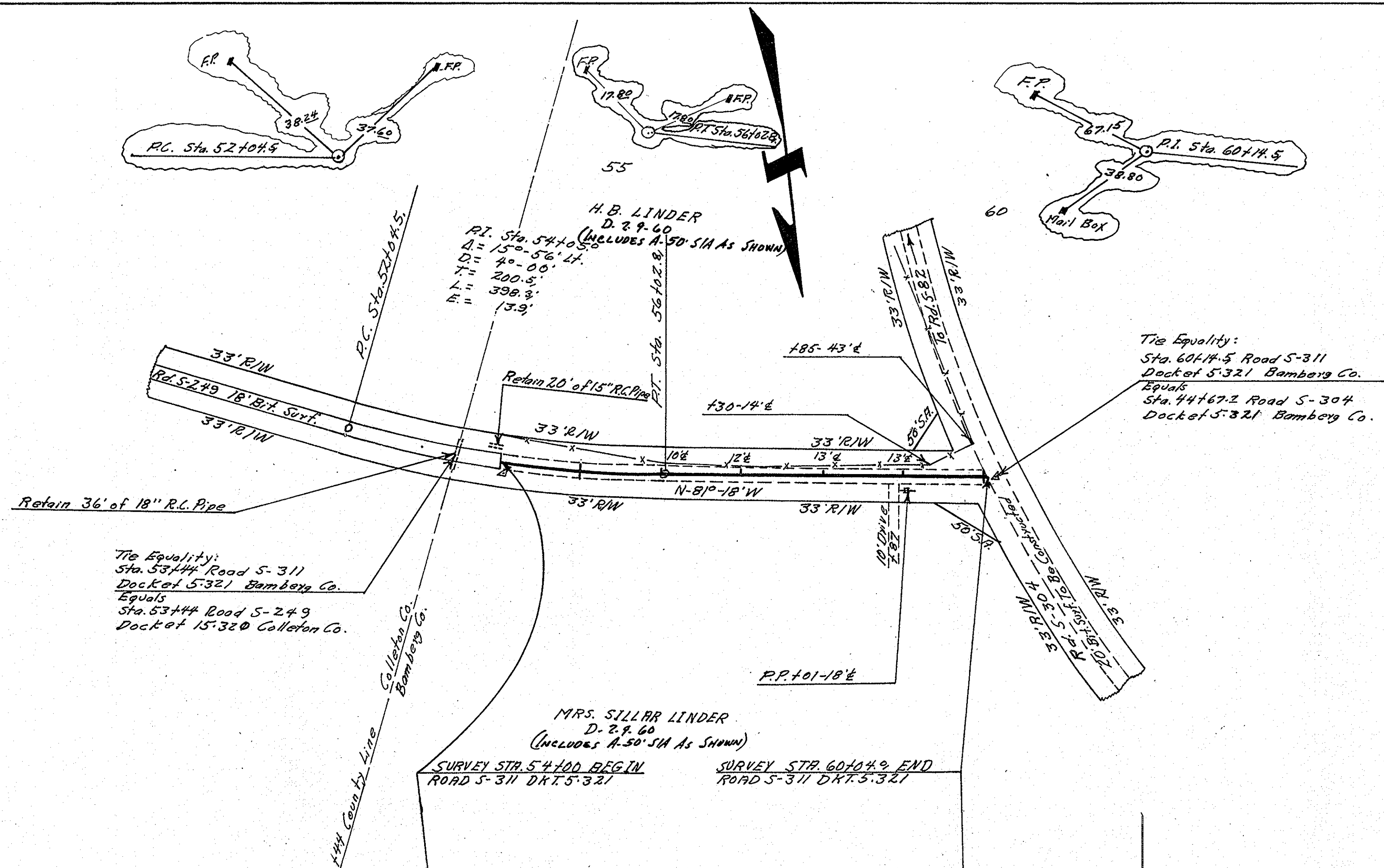
DATE



FED. ROAD DIV. NO.	STATE	COUNTY	DOCKET NO.	PROJECT NO.	Road			TOTAL SHEETS
					SHEET NO.	SHEET NO.	SHEET NO.	
3	S. C.	Bamberg	5-321	None	5-31	6	7	

PLAN	NO.	BY	DATE	SURVEYED	PLOTTED	CHECKED	BY	DATE

PROFILE	NO.	BY	DATE	SURVEYED	PLOTTED	CHECKED	BY	DATE



NOTE

Changes involving increased cost of project or changes in alignment must be specifically authorized by the State Highway Engineer. District Engineer may authorize minor alterations not in conflict with the Standard Practices of the Department and not involving increases in cost. Forward information on any change in alignment to the Columbia Office as soon as the revision is completed.

The following quantities are not shown in detail on the plans, but are included in the Summary of Estimated Quantities and may be varied during construction as directed by the Engineer.

Overhaul	1380 C.Y. H.M. for Base Course Material
Earth Type Base Course (P.T. Material)	10 C.Y. for Intersections
Scarifying, Mixing, Etc.	25% for Compaction
Bituminous Surfacing	0.100 M.S.Y. for Intersections
	100 S.Y. for Intersections

